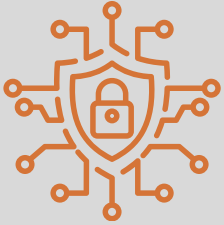




Guidelines for the use of Artificial Intelligence (AI)



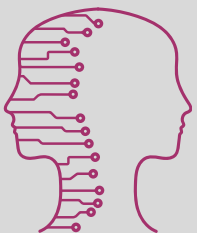
Protect your privacy - NEVER enter any personal or private information into AI tools.

Follow your teacher's guidelines on when and how to use AI to support your learning.



Use AI tools to support your learning and understanding, **not** to do the work for you.

Use district approved AI tools in a way that is consistent with school expectations.



Remember AI tools occasionally produce **biased** or **inaccurate** information. **Check for it!**